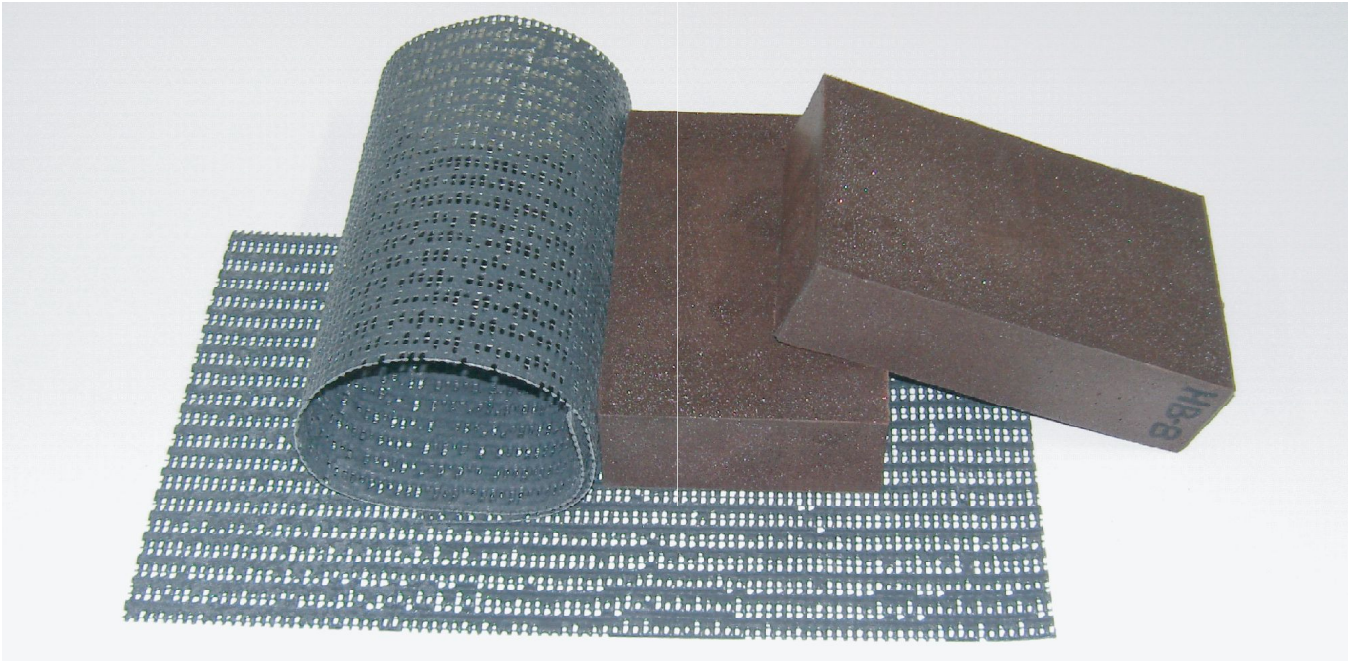


● **Titan - N / B(Fire Prevention · Flame Retardant Expansion Net & Block)**



● **Titan-N Specifications(Fire Prevention · Flame Retardant Expansion Net)**



- D200 - A1 - 1000 (1000 mm)
- D200 - A1 - 5000 (5000 mm)
- Expansion Start Temperature : 204 ~ 232 °C
- Greatest Expansion Range : 260 ~ 400 °C
- Average Net Density : 4.3 ~ 4.4 mm

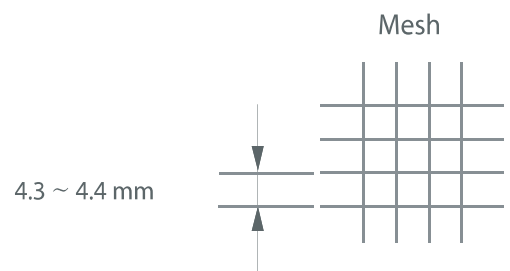
Model	Dimension (mm)	Weight (Kg/ m ²)	Expansion	Color
D200-A1-1000	900 x 1000	min 1.4	max 20 X / 20 sec	Dark Gray
D200-A1-5000	900 x 5000	min 1.4	max 20 X / 20 sec	Dark Gray

. Order No.

D200 - A1 - xxxx

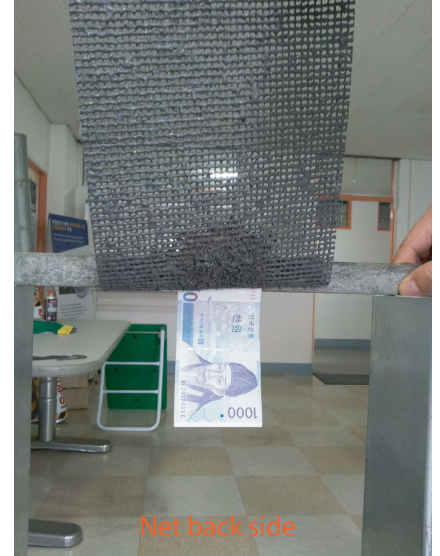
└── 1000 : 900 x 1000 mm
5000 : 900 x 5000 mm

- . Expansion Start Temperature : 204 ~ 232 °C
- . Greatest Expansion Range : 260 ~ 400 °C
- . Average Net Density : 4.3 ~ 4.4 mm
- . Applications
- . Prevention of Electric Cable Fire
- . Prevention Equipment of High-voltage Electrical Arc Fire
- . Fire-Blocking Seat

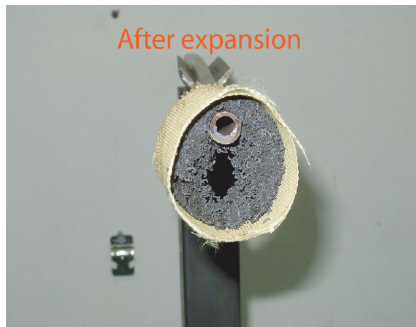


● Titan - N Expansion Test

■ Expansion Test - 1



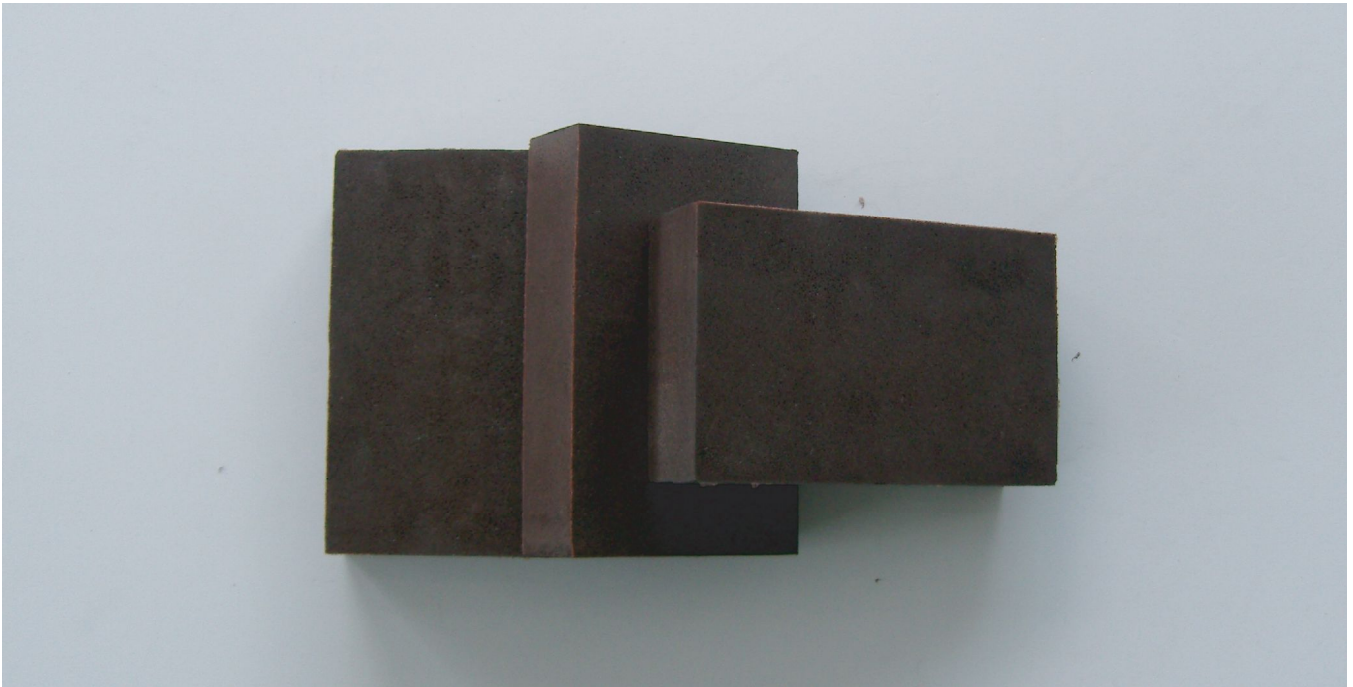
■ Expansion Test - 2



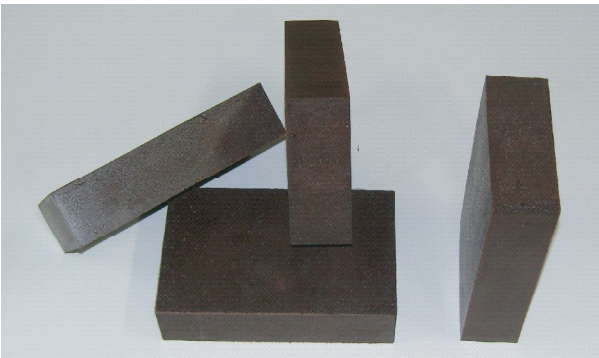
■ Expansion Test - 3 (High Voltage Cable)



● **Titan - B(Fire Prevention · Flame Retardant Expansion Block)**



● **Titan - B Specifications**



- D200 - B1 - 100 (200 x 125 x 50 mm)
- Expansion Start Temperature : 204 ~ 232 °C
- Greatest Expansion Range : 260 ~ 400 °C
- Form Density : 0.274 g/cm³

Model	Dimension (mm)	Weight (g)	Expansion	Color
D200-B1-100	200 x 125 x 50	min 320	max 4 X/ 20 sec	Reddish Brown

. Order No.

D200 - B1 - xxx

└── 100 : 200 x 125 x 50 mm

. Expansion Start Temperature : 204 ~ 232 °C

. Greatest Expansion Range : 260 ~ 400 °C

. Form Density : 0.274 g/cm³

. Applications

- Cable Trays, Duct Fire Blocker
- Floor of the building, Wall Space Fire Blocker
- Assembly foam blocks

